

CARATTERISTICHE E PRESTAZIONI

Cabina

- Conforme alle norme ISO 3449 (FOPS) ed ISO 3471 (ROPS).
- Comandi idraulici a leva o con joystick "4 x 1" elettro-proporzionale in opzione.

Braccio

- Telescopico con scorrimento degli elementi su pattini antifrizione registrabili.
- Sistema idraulico di sfilamento e cavi elettrici totalmente interni al braccio stesso per la massima affidabilità e protezione.
- Dispositivo integrato ad azionamento idraulico per la traslazione laterale.

Zattera porta-attrezzature

- Dispositivo idraulico di aggancio/sgancio rapido sistema Tac-Lock con comando direttamente da cabina.
- Di serie un servizio idraulico a doppio effetto con innesti rapidi per l'azionamento di attrezzi con funzioni idrauliche.

Correttore di inclinazione trasversale

- Ad azionamento idraulico con comando in cabina.

Stabilizzatori anteriori

- A comando indipendente con blocco di sicurezza quando il braccio è sollevato.

Forche

- Di tipo flottante: lunghezza 1200 mm. Sezione 130 x 50 mm.
- L'interasse delle forche è regolabile manualmente da 450 a 1050 mm.

Sterzata

- Quattro ruote sterzanti, con risincronizzazione automatica delle stesse in caso di disallineamento e selezione da cabina di tre modi di sterzata.

Motore

- 4 cilindri diesel Perkins ad emissioni ridotte (Euro 2), con iniezione diretta, raffreddamento ad acqua e potenza a 2400 giri/min (97/68/CE) di 64 kW (86 CV) l'aspirato e 74,5 kW (101 CV) il turbo.

Trasmissione

- Idrostatica con regolazione elettronica.
- Variazione automatica e continua della velocità da zero alla velocità massima operando semplicemente sul pedale dell'acceleratore.
- Cambio di velocità a 2 rapporti.

- Dispositivo a pedale Inching-Control per regolare a piacere la velocità di avanzamento, indipendentemente dal regime motore.
- Sistema Finger-Touch per l'inversione di senso di marcia senza distogliere le mani dal volante.
- Trazione integrale permanente.
- Ponti a portale per un franco da terra maggiore.

Sistema di frenatura

- Freno di servizio a disco sulle 4 ruote, con comando idraulico agente sugli alberi di uscita dei differenziali.
- Freno di stazionamento a disco a bloccaggio automatico con comando idraulico di sbloccaggio, agente sull'albero principale di trasmissione.

Impianto idraulico

- Pompa a cilindrata variabile con comando Load-Sensing.
- Portata massima a regime: 108 l/min.
- Pressione max di esercizio: 210 bar.

Impianto elettrico

- 12 V, batteria da 100 Ah ed alternatore da 90 A.
- Fanaleria stradale completa di girofaro mobile.
- Stacca-batteria manuale (automatico in opzione).

Rifornimenti ed impianti

- Impianto idraulico: 105 l
- Gasolio: 155 l
- Olio idrostatico: 12 l
- Olio motore: 8,5 l
- Liquido di raffreddamento: 12 l

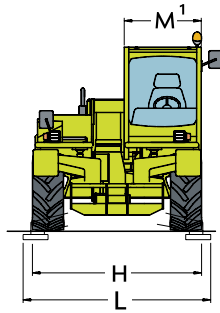
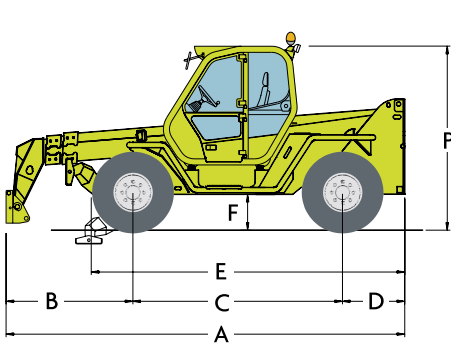
Pneumatici

- 400/70-20.

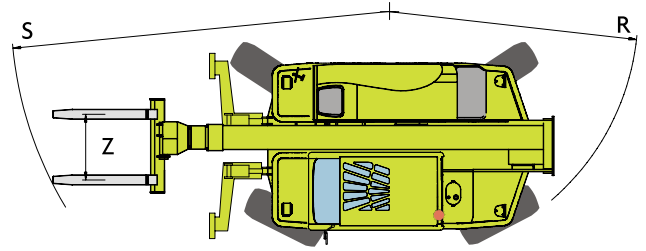
Principali opzioni a richiesta

- Bloccaggio del differenziale posteriore o anteriore/posteriore.
- Stacca-batteria automatico.
- Condizionatore manuale.
- Tergicristallo sul vetro del tettuccio.
- Tre fari di lavoro sulla cabina (due anteriori ed uno posteriore).
- Sedile con sospensione pneumatica.
- Tendina parasole frontale e superiore.
- Sospensione idropneumatica BSS sul braccio o EAS sull'assale anteriore.

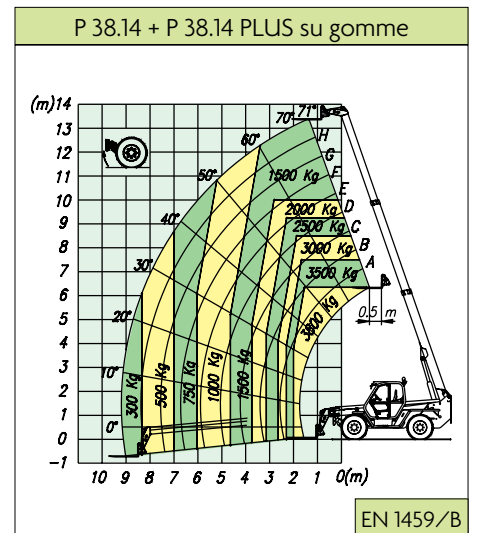
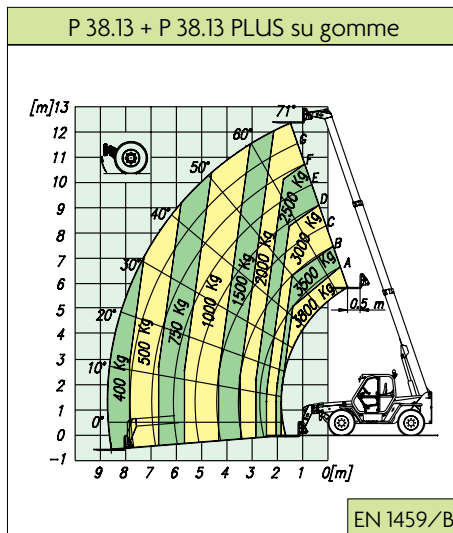
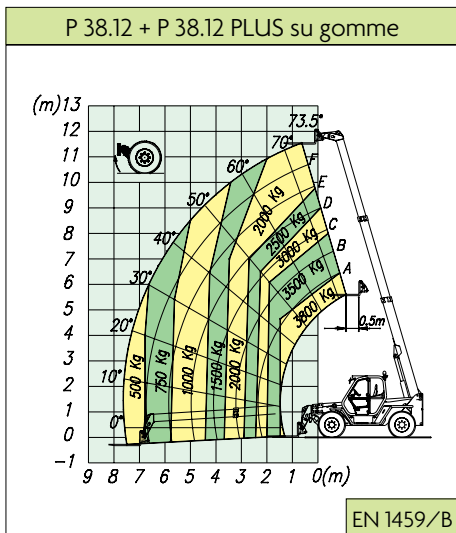
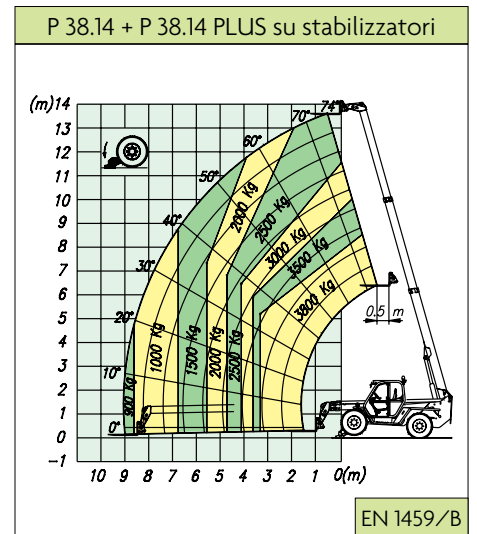
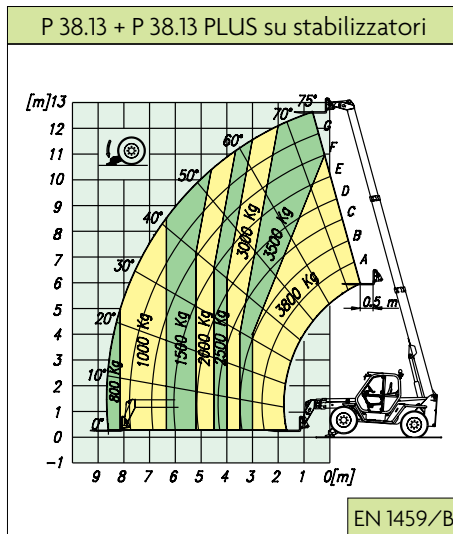
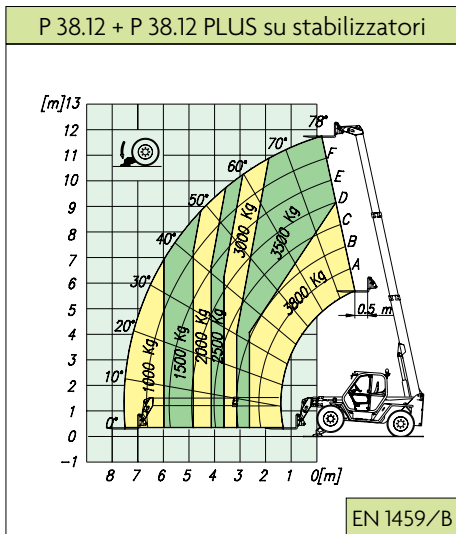
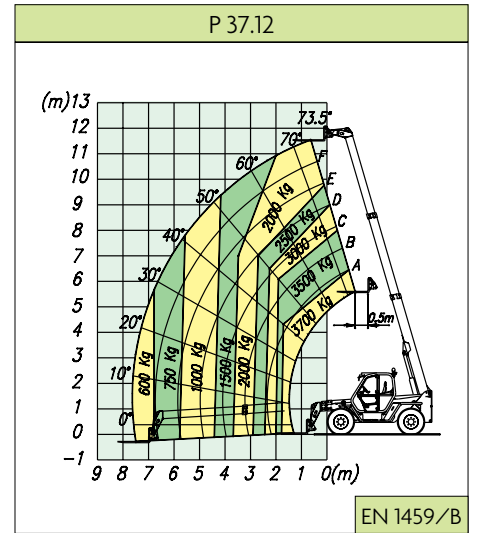
| | | CORRETTORE DI INCLINAZIONE | | CORRETTORE DI INCLINAZIONE + STABILIZZATORI | | | | | |
|---|-------|----------------------------|--------------|---|--------------|---------|--------------|---------|--------------|
| PANORAMIC | | P 37.12 | P 37.12 PLUS | P 38.12 | P 38.12 PLUS | P 38.13 | P 38.13 PLUS | P 38.14 | P 38.14 PLUS |
| Massa | | | | | | | | | |
| Massa totale a vuoto (con forche) | kg | 8700 | 8700 | 8650 | 8650 | 8650 | 8650 | 8900 | 8900 |
| Prestazioni | | | | | | | | | |
| Portata massima | kg | 3700 | 3700 | 3800 | 3800 | 3800 | 3800 | 3800 | 3800 |
| Altezza di sollevamento | m | 11,5 | 11,5 | 11,6 | 11,6 | 12,6 | 12,6 | 13,6 | 13,6 |
| Sbraccio massimo | m | 7,6 | 7,6 | 7,6 | 7,6 | 8,6 | 8,6 | 9,1 | 9,1 |
| Altezza massima alla massima portata | m | 6,2 | 6,2 | 9 | 9 | 11 | 11 | 8 | 8 |
| Sbraccio alla massima portata | m | 1,8 | 1,8 | 2,7 | 2,7 | 3 | 3 | 3,3 | 3,3 |
| Portata alla massima altezza | kg | 2000 | 2000 | 3500 | 3500 | 3500 | 3500 | 2500 | 2500 |
| Portata al massimo sbraccio | kg | 600 | 600 | 1000 | 1000 | 800 | 800 | 900 | 900 |
| Motore ad emissioni ridotte (Euro 2) | atmo | turbo | turbo | atmo | turbo | atmo | turbo | atmo | turbo |
| Potenza a 2400 giri/min (97/68/CE) | kW/CV | 64/86 | 74,5/101 | 64/86 | 74,5/101 | 64/86 | 74,5/101 | 64/86 | 74,5/101 |
| Velocità | | | | | | | | | |
| 1° marcia | km/h | 7 | 11 | 7 | 11 | 7 | 11 | 7 | 11 |
| 2° marcia (velocità massima autolimitata) | km/h | 25 | 40 | 25 | 40 | 25 | 40 | 25 | 40 |



⁽¹⁾ Larghezza utile interna



| PANORAMIC | | P 37.12 PLUS P 37.12 | P 38.12 PLUS P 38.12 | P 38.13 PLUS P 38.13 | P 38.14 PLUS P 38.14 |
|-------------------|----|-------------------------|-------------------------|-------------------------|-------------------------|
| Dimensioni | | | | | |
| A | mm | 4850 | 4850 | 5240 | 5590 |
| B | mm | 1285 | 1285 | 1675 | 1540 |
| C | mm | 2750 | 2750 | 2750 | 2750 |
| D | mm | 815 | 815 | 815 | 4100 |
| E | mm | 4100 | 4100 | 4100 | 4585 |
| F | mm | 480 | 480 | 480 | 480 |
| H | mm | 2220 | 2220 | 2220 | 2220 |
| L | mm | - | 2420 | 2420 | 2420 |
| M | mm | 995 | 995 | 995 | 995 |
| P | mm | 2440 | 2440 | 2440 | 2440 |
| R | mm | 3920 | 3920 | 3920 | 3920 |
| S | mm | 4900 | 4900 | 4940 | 5040 |
| Z | mm | 850 | 850 | 850 | 850 |



CARACTERISTIQUES ET PERFORMANCES

Cabine

- Conforme aux normes ISO 3449 (FOPS) et ISO 3471 (ROPS).
- Commandes hydrauliques ou joystick "4 x 1" électro-proportionnel en option.

Flèche

- Télésopique avec coulissement des éléments sur patins anti-friction réglables.
- Système hydraulique de sortie et câbles électriques intégrés dans la flèche afin d'obtenir fiabilité et protection.
- Dispositif intégré à actionnement hydraulique de déport.

Tablier porte-équipements

- Dispositif hydraulique d'accrochage/décrochage rapide système Tac-Lock avec commande en cabine.
- De série un service hydraulique à double effet avec enclenchements rapides pour l'actionnement d'outils ayant des fonctions hydrauliques.

Correcteur de dévers

- A actionnement hydraulique avec commande en cabine.

Stabilisateurs AV

- A commande indépendante avec blocage de sécurité quand la flèche est levée.

Fourches

- De type flottant: longueur 1200 mm. Section 130 x 50.
- L'entraxe des fourches est réglable manuellement de 450 à 1050 mm.

Braquage

- Quatre roues directionnelles, avec re-synchronisation automatique à fin-course en cas de désalignement et sélection de trois modes de braquage depuis la cabine.

Moteur

- 4 cylindres diesel Perkins à émissions réduites (Euro 2), avec injection directe, refroidissement à eau et puissance à 2400 tr/min (97/68/CE) de 64 kW (86 CV) l'atmo et de 74,5 kW (101 CV) le turbo.

Transmission

- Hydrostatique à réglage électronique.
- Variation automatique et continue de la vitesse de zéro à la vitesse maximale en agissant tout simplement sur la pédale d'accélérateur.
- Boîte de vitesses mécanique à 2 rapports.
- Dispositif Inching-Control pour régler à l'infini la vitesse d'avancement

indépendamment du régime moteur.

- Système Finger-Touch pour l'inversion du sens de marche sans ôter les mains du volant.
- Traction intégrale permanente.
- Ponts en portique pour une garde au sol plus importante.

Système de freinage

- Frein de service à disque sur les 4 roues, avec commande hydraulique agissant sur les arbres de sortie des différentiels.
- Frein de stationnement à disque à blocage automatique avec commande hydraulique de déblocage, agissant sur l'arbre principal de transmission.

Circuit hydraulique

- Pompe à débit variable avec commande Load-Sensing.
- Débit maximum en régime: 108 l/min.
- Pression d'exercice: 210 bar.

Circuit électrique

- 12 V, batterie de 100 Ah et alternateur de 90 A.
- Groupe optique et gyrophare mobile.
- Coupe-batterie manuel (automatique en option)

Capacité des réservoirs

- Circuit hydraulique: 105 l
- Gazole: 155 l
- Huile hydrostatique: 12 l
- Huile moteur: 8,5 l
- Liquide de refroidissement: 12 l

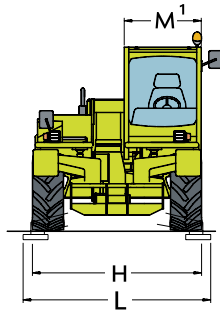
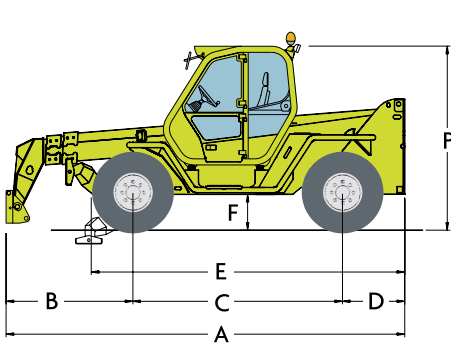
Pneus

- 400/70-20.

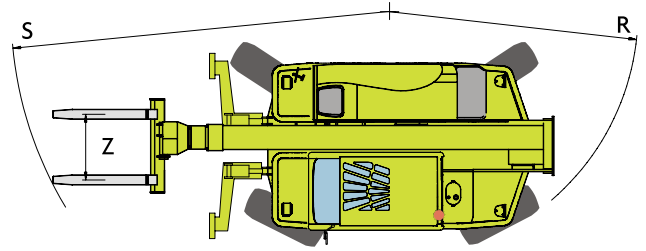
Principales options

- Blocage du différentiel AR ou AV/AR.
- Coupe-batterie automatique.
- Conditionneur manuel.
- Essuie-glace sur la vitre du toit.
- Trois feux de travail sur la cabine (deux à l'avant et un à l'arrière).
- Siège avec suspension pneumatique.
- Pare-soleil frontal et supérieur.
- Suspensions hydropneumatiques BSS sur la flèche ou EAS sur le pont AV.

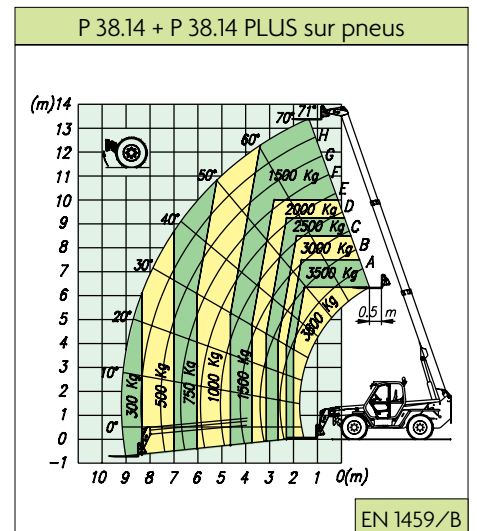
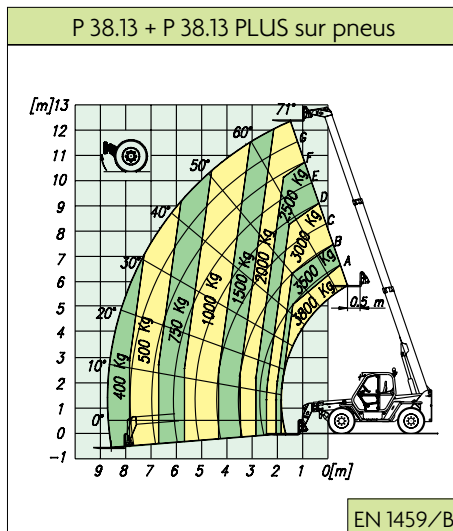
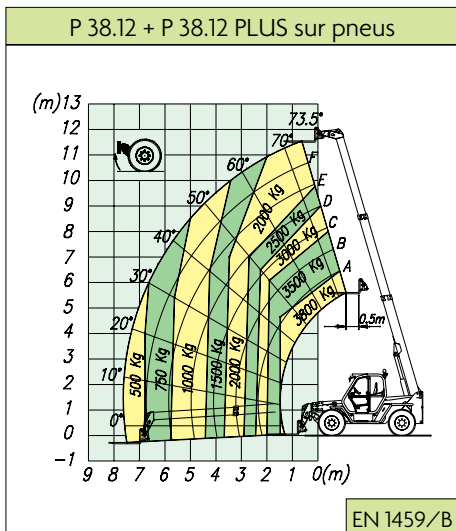
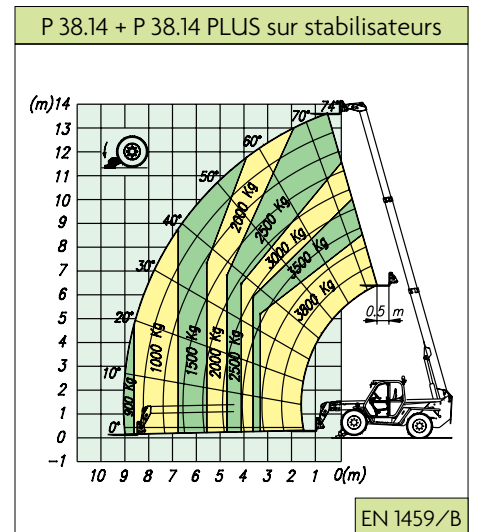
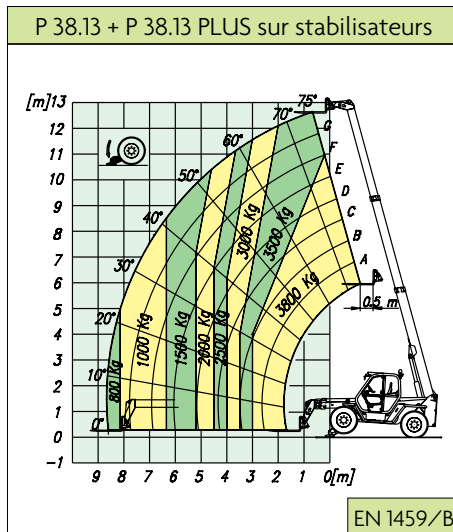
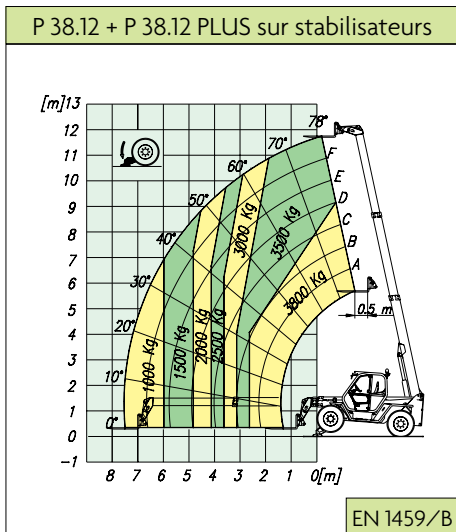
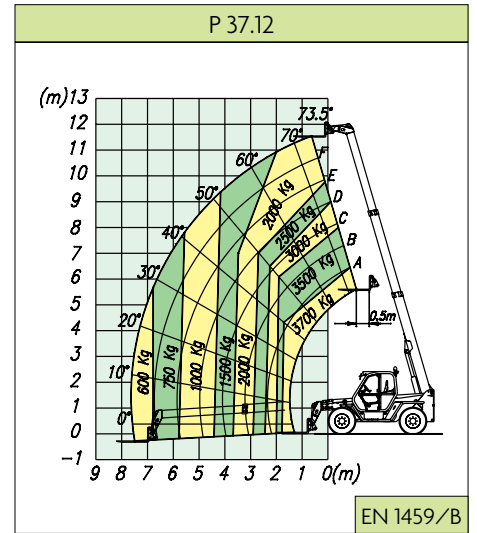
| | | CORRECTEUR DE DEVERS | | CORRECTEUR DE DEVERS + STABILISATEURS | | | | | |
|--|-------|----------------------|--------------|---------------------------------------|--------------|---------|--------------|---------|--------------|
| PANORAMIC | | P 37.12 | P 37.12 PLUS | P 38.12 | P 38.12 PLUS | P 38.13 | P 38.13 PLUS | P 38.14 | P 38.14 PLUS |
| Masse | | | | | | | | | |
| Masse totale à vide (avec fourches) | kg | 8700 | 8700 | 8650 | 8650 | 8650 | 8650 | 8900 | 8900 |
| Performances | | | | | | | | | |
| Charge maximale | kg | 3700 | 3700 | 3800 | 3800 | 3800 | 3800 | 3800 | 3800 |
| Hauteur maximale de levage | m | 11,5 | 11,5 | 11,6 | 11,6 | 12,6 | 12,6 | 13,6 | 13,6 |
| Portée maximale | m | 7,6 | 7,6 | 7,6 | 7,6 | 8,6 | 8,6 | 9,1 | 9,1 |
| Hauteur maxi à la charge maxi | m | 6,2 | 6,2 | 9 | 9 | 11 | 11 | 8 | 8 |
| Portée à charge maxi | m | 1,8 | 1,8 | 2,7 | 2,7 | 3 | 3 | 3,3 | 3,3 |
| Charge à hauteur maxi | kg | 2000 | 2000 | 3500 | 3500 | 3500 | 3500 | 2500 | 2500 |
| Charge à portée maxi | kg | 600 | 600 | 1000 | 1000 | 800 | 800 | 900 | 900 |
| Moteur à émissions réduites (Euro 2) | | atmo | turbo | atmo | turbo | atmo | turbo | atmo | turbo |
| Puissance à 2400 tr/min (97/68/CE) | kW/CV | 64/86 | 74,5/101 | 64/86 | 74,5/101 | 64/86 | 74,5/101 | 64/86 | 74,5/101 |
| Vitesse | | | | | | | | | |
| 1 ^{er} rapport | km/h | 7 | 11 | 7 | 11 | 7 | 11 | 7 | 11 |
| 2 nd rapport (vitesse auto-limitée) | km/h | 25 | 40 | 25 | 40 | 25 | 40 | 25 | 40 |



(1) Largeur utile interne



| PANORAMIC | | P 37.12 PLUS P 37.12 | P 38.12 PLUS P 38.12 | P 38.13 PLUS P 38.13 | P 38.14 PLUS P 38.14 |
|-------------------|----|-------------------------|-------------------------|-------------------------|-------------------------|
| Dimensions | | | | | |
| A | mm | 4850 | 4850 | 5240 | 5590 |
| B | mm | 1285 | 1285 | 1675 | 1540 |
| C | mm | 2750 | 2750 | 2750 | 2750 |
| D | mm | 815 | 815 | 815 | 1300 |
| E | mm | 4100 | 4100 | 4100 | 4585 |
| F | mm | 480 | 480 | 480 | 480 |
| H | mm | 2220 | 2220 | 2220 | 2220 |
| L | mm | - | 2420 | 2420 | 2420 |
| M | mm | 995 | 995 | 995 | 995 |
| P | mm | 2440 | 2440 | 2440 | 2440 |
| R | mm | 3920 | 3920 | 3920 | 3920 |
| S | mm | 4900 | 4900 | 4940 | 5040 |
| Z | mm | 850 | 850 | 850 | 850 |



PERFORMANCE AND DIMENSIONS

Cab

- Complies with ISO 3449 (FOPS) and ISO 3471 (ROPS) standards.
- Lever controls or optional '4 x 1' electro-mechanical joystick with roller-operated proportional control.

Boom

- Telescopic, with sections sliding on adjustable low-friction pads.
- Hydraulic extension mechanism, hydraulic pipes and electrics are totally enclosed within the boom assembly to ensure maximum protection and reliability.
- Integral boom side-shift mechanism.

Quick-attach carriage

- The Tac-Lock quick attachment fitting system is hydraulically controlled from the cab.
- Standard double-acting hydraulic service, with quick couplings, for the operation of hydraulically powered attachments.

Frame levelling

- Hydraulically operated from the cab.

Front stabilisers

- Independently controlled with automatic lock when the boom exceeds the preset safety angle.

Forks

- Floating type. Length 1200mm. Section 130 x 50mm.
- Fork spacing is manually adjustable between 450 and 1050mm.

Steering

- Four drive/steer wheels, with automatic wheel synchronisation in the event of any misalignment and selection of three steering modes from the cab.

Engine

- Direct injection, water cooled, 4 cylinder Perkins Euro 2 diesel engine producing 64kW-86HP (naturally aspirated) and 74.5kW-101HP (turbo) at 2400rpm (97/68/CE).

Transmission

- Hydrostatic with electronically controlled variable displacement pump.
- Continuous and automatic speed variation, from zero to maximum speed, solely with the accelerator pedal.
- Two-speed mechanical range gearbox.
- Inching-Control pedal to proportionately reduce travel speed whilst

maintaining high engine speed for hydraulic operation e.g. during loading operations.

- Finger-Touch system makes it possible to change between forward and reverse direction with the driver keeping both hands firmly on the steering wheel.
- Permanent four-wheel drive.
- Portal axles ensuring excellent ground clearance.

Braking system

- Disk service brakes on all 4 wheels, hydraulically operated and acting on the differential output shafts.
- Disk parking brake with automatic locking feature and hydraulic release control, acting on the main transmission shaft.

Hydraulic system

- Variable delivery Load-Sensing pump.
- Maximum operating capacity: 108lpm.
- Working pressure: 210bar.

Electrics

- 12V system with 100Ah battery and 90A alternator.
- Full road lighting and rotating beacon.
- Manual battery isolator switch (optional automatic switch).

Service capacities

- Hydraulic oil: 105 litres
- Diesel fuel: 155 litres
- Hydrostatic oil: 12 litres
- Engine oil: 8.5 litres
- Coolant: 12 litres

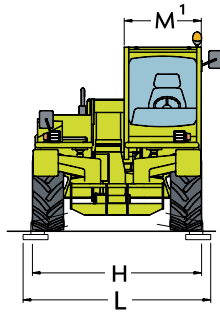
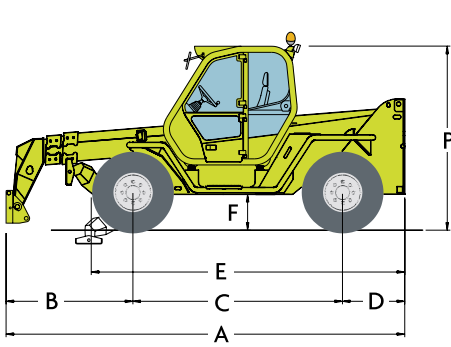
Tyres

- 400/70-20.

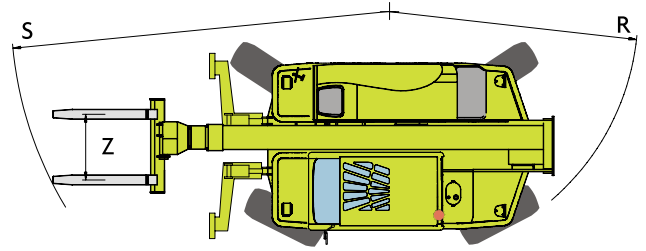
Available options

- Front and/or rear axle differential lock.
- Automatic battery isolator.
- Manual control air conditioning.
- Windscreen wiper on the roof window.
- Three working lights on the cab (two front lights and one rear).
- Pneumatic seat.
- Roof and front window mounted sun blinds.
- BSS boom suspension system or EAS front axle suspension.

| | | FRAME LEVELLING | | FRAME LEVELLING + STABILISERS | | | | | |
|--|-------|-------------------|--------------|-------------------------------|--------------|-------------------|--------------|-------------------|--------------|
| PANORAMIC | | P 37.12 | P 37.12 PLUS | P 38.12 | P 38.12 PLUS | P 38.13 | P 38.13 PLUS | P 38.14 | P 38.14 PLUS |
| Weight | | | | | | | | | |
| Total empty weight (with forks) | kg | 8700 | 8700 | 8650 | 8650 | 8650 | 8650 | 8900 | 8900 |
| Performance | | | | | | | | | |
| Rated maximum load | kg | 3700 | 3700 | 3800 | 3800 | 3800 | 3800 | 3800 | 3800 |
| Maximum lift height | m | 11.5 | 11.5 | 11.6 | 11.6 | 12.6 | 12.6 | 13.6 | 13.6 |
| Maximum forward reach | m | 7.6 | 7.6 | 7.6 | 7.6 | 8.6 | 8.6 | 9.1 | 9.1 |
| Lift height at full capacity | m | 6.2 | 6.2 | 9 | 9 | 11 | 11 | 8 | 8 |
| Reach at full capacity | m | 1.8 | 1.8 | 2.7 | 2.7 | 3 | 3 | 3.3 | 3.3 |
| Capacity at full lift height | kg | 2000 | 2000 | 3500 | 3500 | 3500 | 3500 | 2500 | 2500 |
| Capacity at full forward reach | kg | 600 | 600 | 1000 | 1000 | 800 | 800 | 900 | 900 |
| Low emission (Euro 2) engine | | nat. aspirated | turbo | nat. aspirated | turbo | nat. aspirated | turbo | nat. aspirated | turbo |
| Power at 2400rpm (97/68/CE) | kW/HP | 64/86 | 74.5/101 | 64/86 | 74.5/101 | 64/86 | 74.5/101 | 64/86 | 74.5/101 |
| Speed ratios | | | | | | | | | |
| 1 st gear | kph | 7 | 11 | 7 | 11 | 7 | 11 | 7 | 11 |
| 2 nd gear (self-limiting maximum speed) | kph | 25 | 40 | 25 | 40 | 25 | 40 | 25 | 40 |



(1) Internal width



| | PANORAMIC | P 37.12 PLUS P 37.12 | P 38.12 PLUS P 38.12 | P 38.13 PLUS P 38.13 | P 38.14 PLUS P 38.14 |
|-------------------|-----------|-------------------------|-------------------------|-------------------------|-------------------------|
| Dimensions | | | | | |
| A | mm | 4850 | 4850 | 5240 | 5590 |
| B | mm | 1285 | 1285 | 1675 | 1540 |
| C | mm | 2750 | 2750 | 2750 | 2750 |
| D | mm | 815 | 815 | 815 | 1300 |
| E | mm | 4100 | 4100 | 4100 | 4585 |
| F | mm | 480 | 480 | 480 | 480 |
| H | mm | 2220 | 2220 | 2220 | 2220 |
| L | mm | - | 2420 | 2420 | 2420 |
| M | mm | 995 | 995 | 995 | 995 |
| P | mm | 2440 | 2440 | 2440 | 2440 |
| R | mm | 3920 | 3920 | 3920 | 3920 |
| S | mm | 4900 | 4900 | 4940 | 5040 |
| Z | mm | 850 | 850 | 850 | 850 |

